

The background of the slide is a collage of handwritten physics notes. At the top, there's a diagram with a horizontal line labeled '-const' and several vertical lines below it, with a symbol resembling a summation or integral symbol between them. To the right, the equation $V = \text{const} \cdot \frac{1}{r^2}$ is visible. In the center, a large white box contains the main title. Below the title, there's a diagram showing a line with a slope, labeled with $\Delta\omega$ and E . To the right of this, the equation $E = mc^2$ is written. At the bottom right, the equation $U_g = U_I t = \int U dt$ is partially visible. On the left side, there are some other handwritten notes including \vec{a} , $0, v = 2$, and $v = 3 m/s$.

YOUR JOURNEY TOWARDS THE FRONTIERS OF KNOWLEDGE STARTS HERE

Ana Cueto

PARTICLE ITINERARY COORD.

MASTER'S IN

THEORETICAL PHYSICS

UNIVERSIDAD AUTÓNOMA DE MADRID

**WELCOME,
STUDENTS!**



Instituto de
Física
Teórica



Universidad Autónoma
de Madrid

STRUCTURE OF THE MSC

Particles

Compulsory

QUANTUM FIELD THEORY
STANDARD MODEL

Optional

ADVANCED MATHEMATICS
ADVANCED QUANTUM FIELD THEORY
OPEN PROBLEMS IN THE SM
EXPERIMENTAL PARTICLE PHYSICS
QUANTUM ENTANGLEMENT AND INFORMATION

Astrophysics

Compulsory

RADIATIVE PROCESSES IN ASTROPHYSICS
OBSERVATIONAL TECHNIQUES IN
ASTROPHYSICS
STELLAR STRUCTURE AND EVOLUTION

Optional

COMPUTATIONAL ASTROPHYSICS
GALAXY FORMATION AND EVOLUTION

Compulsory common

GRAVITATION
COSMOLOGY

Optional common

ASTROPARTICLE PHYSICS
ADVANCE COSMOLOGY
ADVANCE GRAVITATION

THROUGHOUT THE YEAR....

1º Trimester

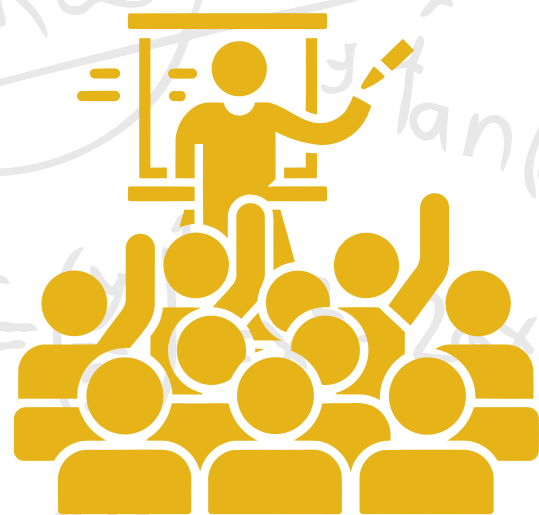
**September 8th -
November 28th**

2º Trimester

**December 1th -
March 6th**

3º Trimester

**March 9th -
May 29th**



**September 8th -
November 14th**

**December 1th -
February 20th**

**March 9th -
May 22th**

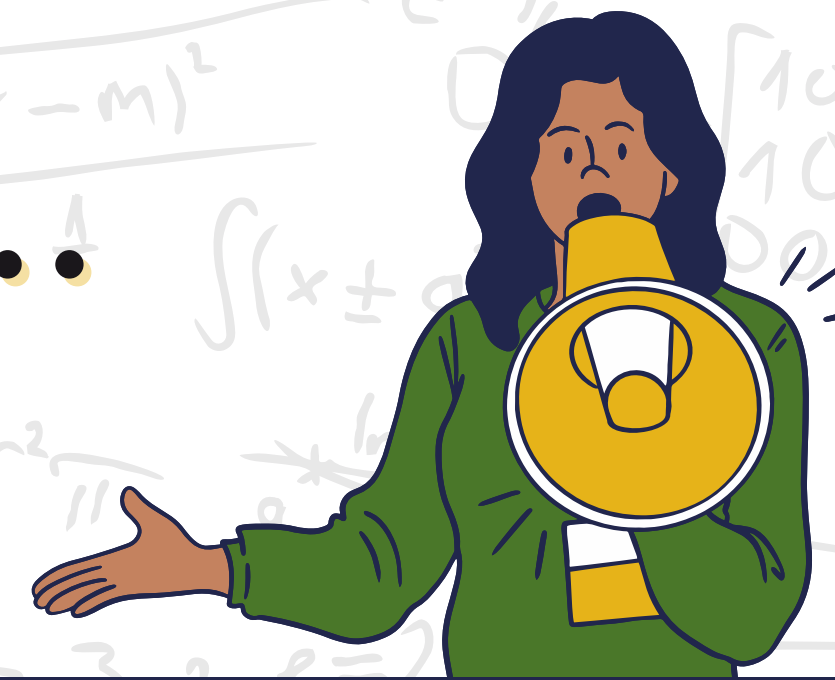
**November 17th -
November 28th**

**February 23th -
March 6th**

**May 25th -
May 29th**



THROUGHOUT THE YEAR....



The MSc Final Evaluation

SECOND CALL

JUNE 1 TO 5

TIME	MONDAY	TUESDAY	WEDNESDAY	THURSDAY	FRIDAY
MORNING	GRA	QFT	MAV	PRA	TOA
AFTERNOON					
	At the Centre's discretion	POSSIBLE EXAMS EvAU 2026			

JUNE 8 TO 12

TIME	MONDAY	TUESDAY	WEDNESDAY	THURSDAY	FRIDAY
MORNING	EEE	COSMO	AQFT	SM	FEP
AFTERNOON					

JUNE 15 TO 19

TIME	MONDAY	TUESDAY	WEDNESDAY	THURSDAY	FRIDAY
MORNING	ASP	OPSM	COAv	ACO	GRAAv
AFTERNOON					

JUNE 22 TO 26

TIME	MONDAY	TUESDAY	WEDNESDAY	THURSDAY	FRIDAY
MORNING	QEI	FisExp		FEG	
AFTERNOON					

The MSc Thesis

STEPS

A list of
available topics
will be sent
today

CHOOSE TOPIC

1

The TFM is your
chance to get first-
hand research
experience.

DIVE INTO RESEARCH

3

START YOUR
JOURNEY

Work on the project throughout
the year

2

WRITE YOUR MSC
THESIS

Summarize your
project in a formal
document.

4

CHOOSE YOUR
DEFENSE PERIOD

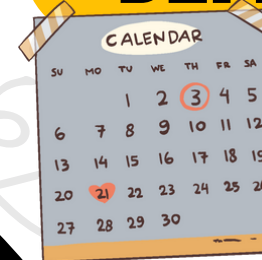
July or
September

DEFEND YOUR WORK

6

5

Present and discuss
your thesis in front of a
committee.



RESOURCES

At the IFT, you are welcome to use the common areas and the library (ground floor) for study or borrow books.



common areas



library

SEMINARS AND COLLOQUIA

You can also attend the seminar series at the IFT and/or DFT:

IFT Seminars

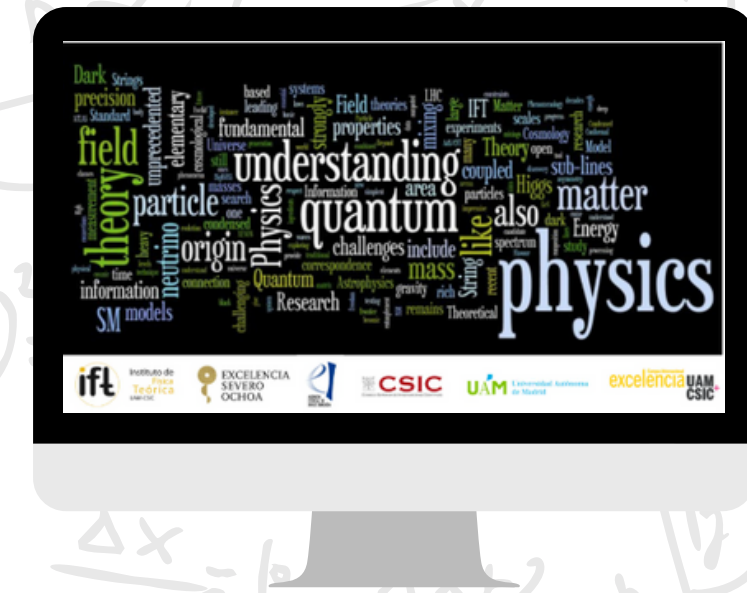
<https://www.ift.uam-csic.es/en/events/seminar>

IFT Colloquia

<https://www.ift.uam-csic.es/en/events/colloquium>

Old Journal Club

<https://www.ift.uam-csic.es/es/events/old-journal-club>



DFT events

<https://www.uam.es/ciencias/facultad/departamentos/fisica-teorica>

CIAFF events

<http://www.ciaff.uam.es/events>

EQUITY, DIVERSITY, AND INCLUSION ON CAMPUS

UAM and IFT as a whole are committed to providing an inclusive and welcoming environment for all: No discrimination based on personal factors including (but not limited to) race, color, national or ethnic origin, alienage, age, religion, creed, sex, sexual orientation, gender identity or expression, marital status, functional diversity, political affiliation or philosophy. UAM and IFT do not tolerate actions that constitute discrimination or harassment.

Gender Equality Unit @UAM

(<https://www.uam.es/uam/unidad-igualdad-genero>)



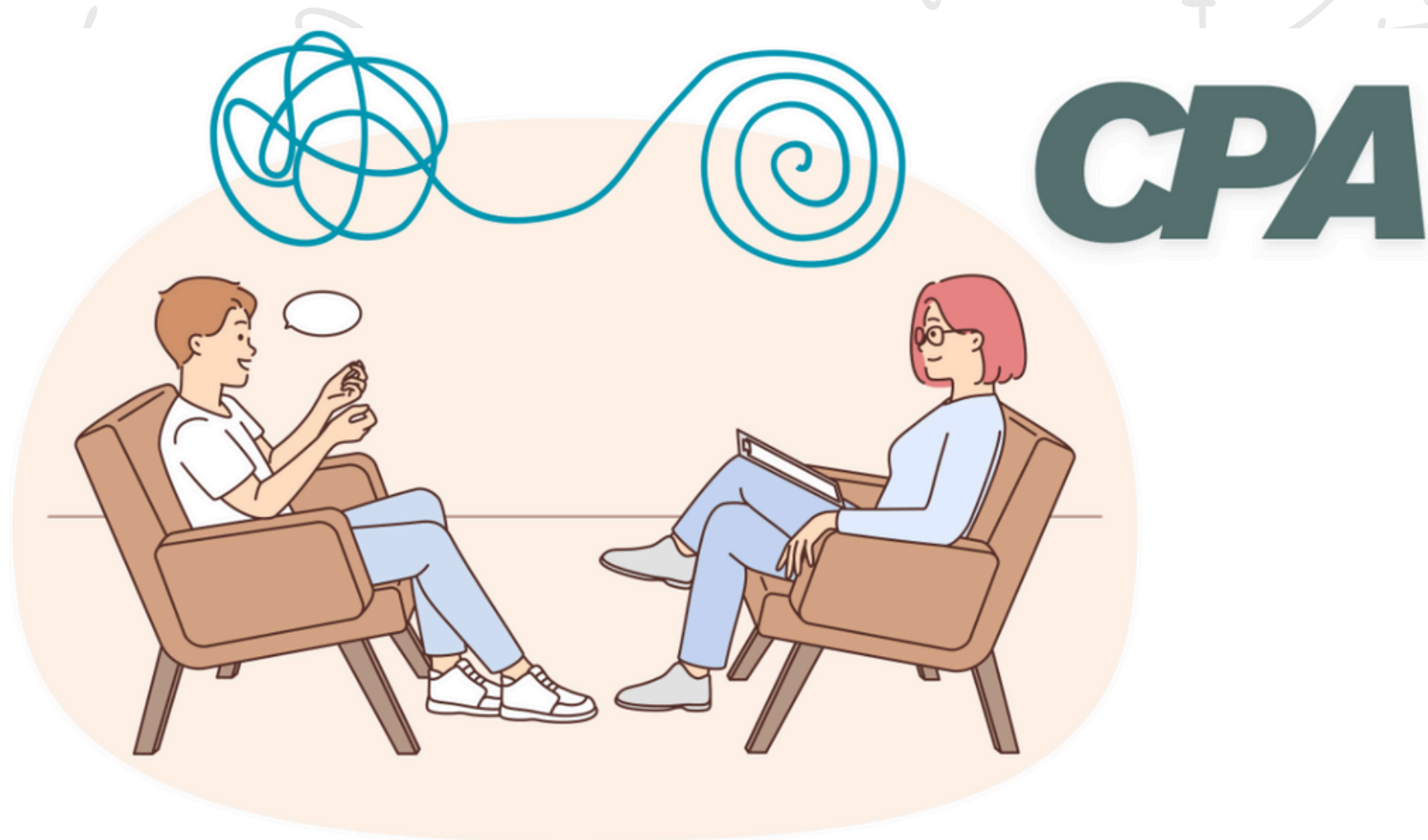
Universidad Autónoma de Madrid

Equity, Diversity, and Inclusion (EDI) Committee @IFT

(<https://members.ift.uam-csic.es/ed/>)



CENTRO DE PSICOLOGÍA APLICADA



If you're a student and need support with stress, anxiety, your studies, or any personal challenge, the CPA at the Faculty of Psychology is here to help. They offer professional care with reduced fees for UAM students and the best part: it's right on campus!

YOUR OPINION IS IMPORTANT FOR US

Fill in the Student Questionnaires at the end of the year!! This is the main way in which we can identify what we can improve!



For any question/comment/problem/suggestion, do not hesitate to contact us:

Ernesto Arganda (Ernesto.arganda@uam.es) Master's Coordinator.

Ana Cueto (anar.cueto@uam.es) Coord. of PEC itinerary.

Yago Ascasibar (yago.ascasibar@uam.es) Coord. of ACF itinerary.



MSc Theoretical Physics

Universidad Autónoma de Madrid